

A N E T İ L



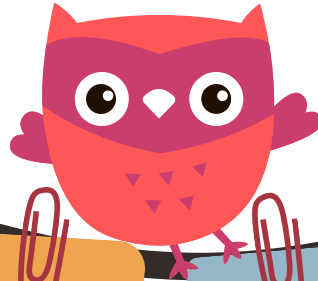
İLK



OKUMA



YAZMA



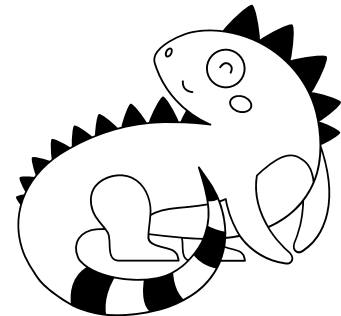
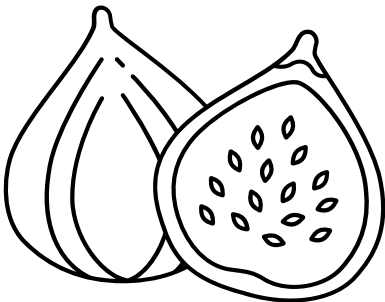
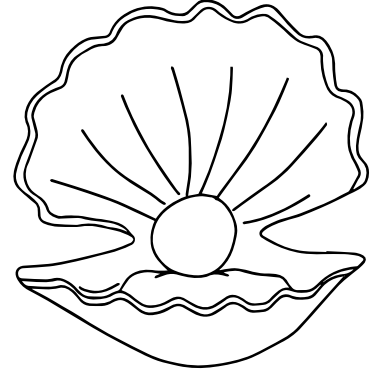
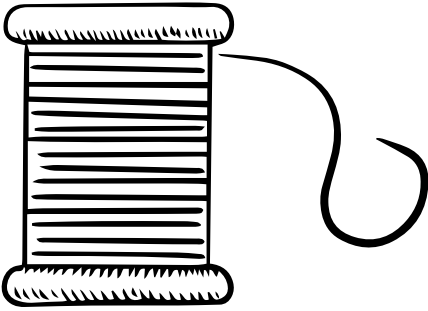
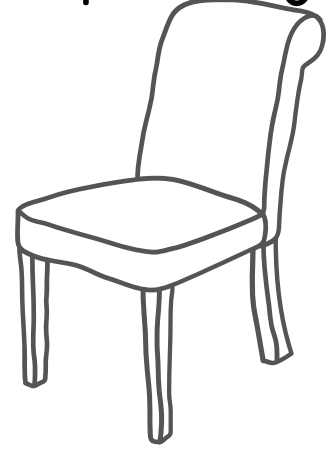
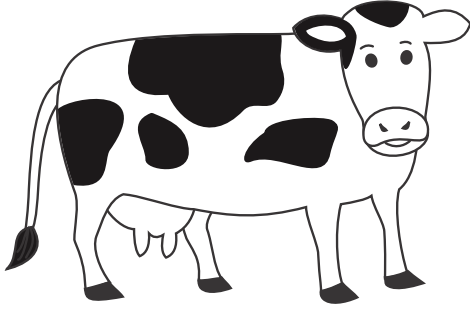
i SESİ

HAFTASONU ÇALIŞMA SAYFALARI

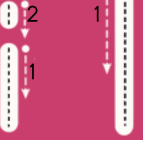
A N E T İ L



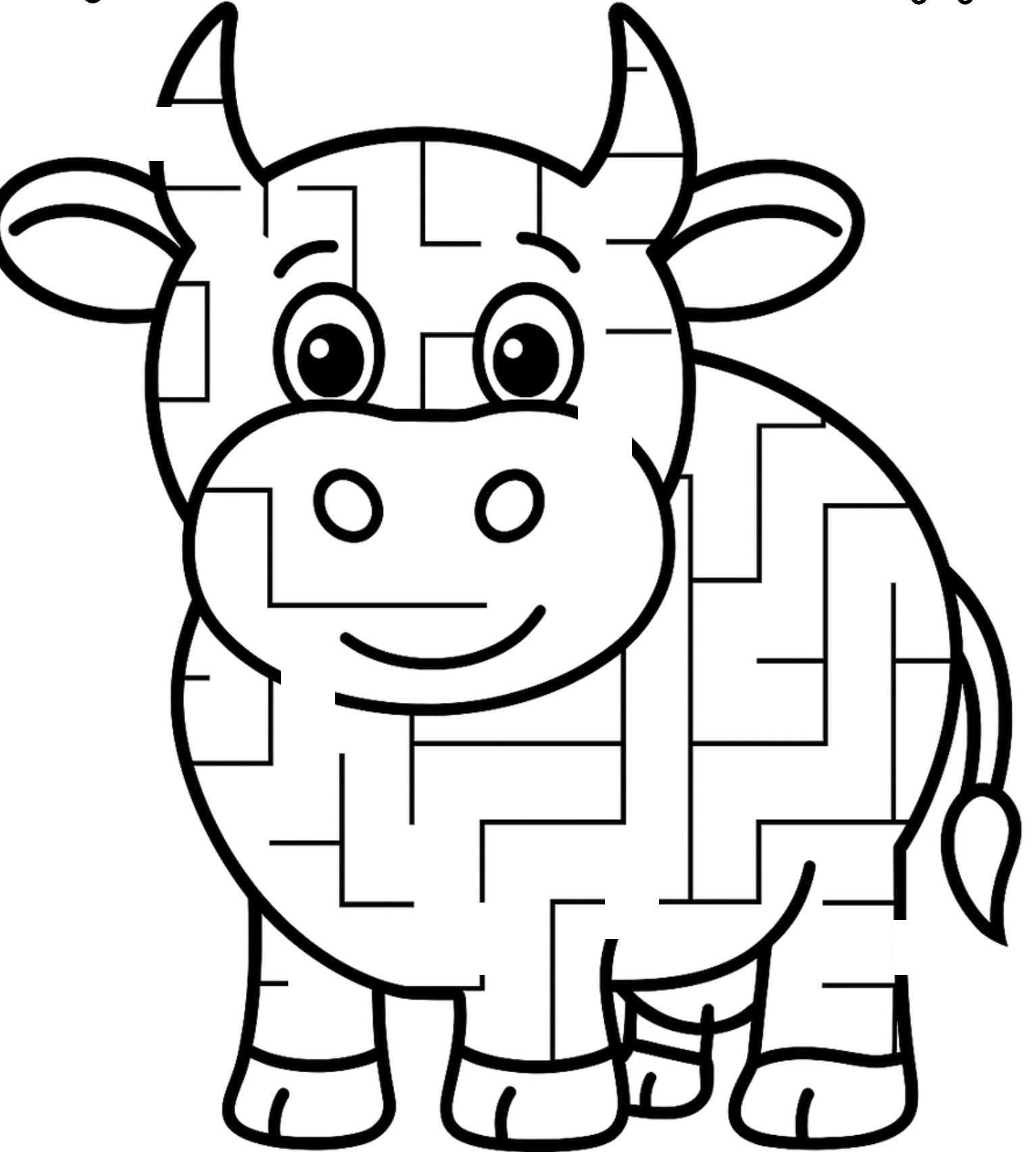
İçinde "i-l" sesi olan görselleri bulup boyayalım.



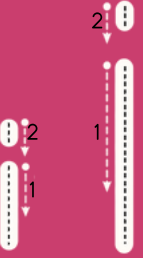
A N E T İ L



Aşağıda verilen inek labirentini özelim sonra boyayalım.



A N E T İ L



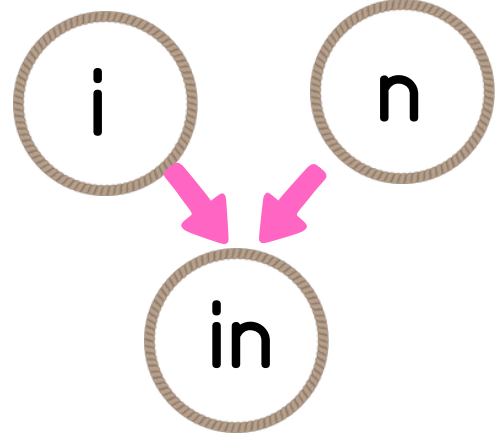
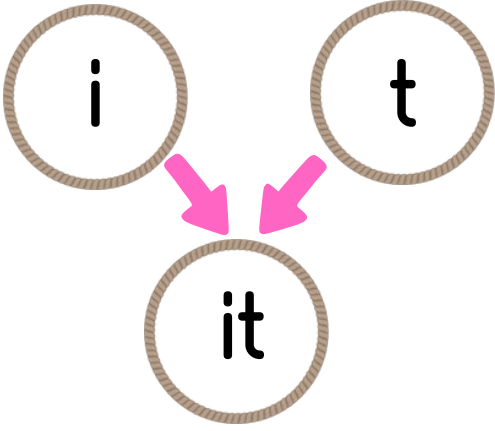
“i-İ” sesini yazalım.

Handwriting practice area with multiple sets of horizontal lines. Each set consists of a solid top line, a dashed middle line, and a solid bottom line. The area between the dashed and solid middle lines is highlighted in yellow to guide letter height.

A N E T İ L

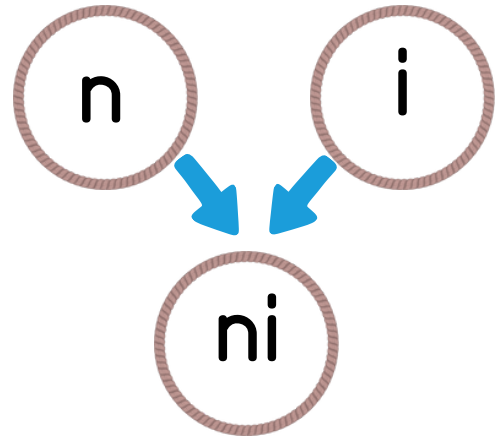
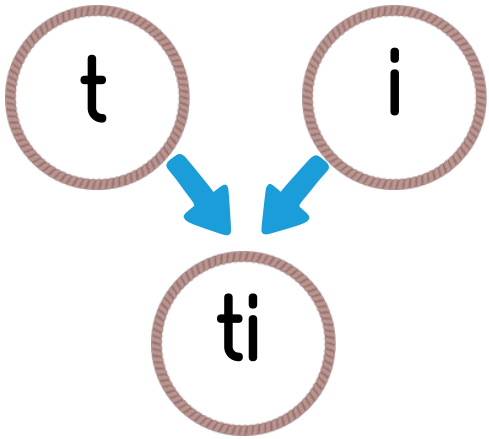


“t-T” sesine ait heceleri okuyup yazalım.



it

in



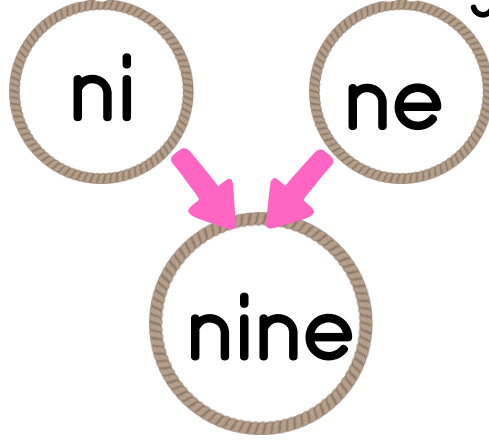
ti

ni

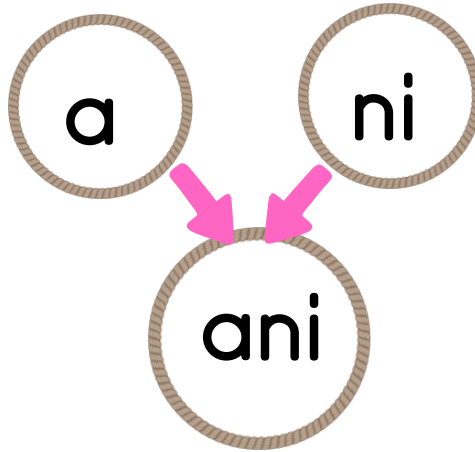
A N E T İ L



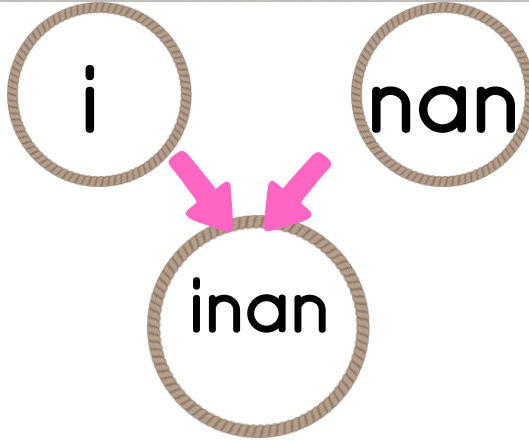
“i-İ” sesine ait heceleri okuyup yazalım.



nine

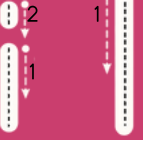


ani



inan

A N E T İ L



Harfleri uygun yerlere yerleřtirip okuyalım.

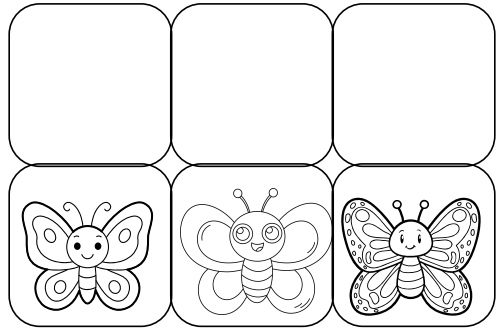
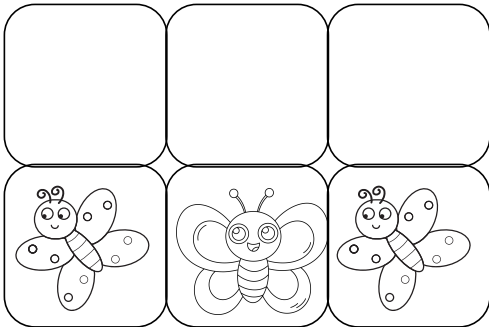
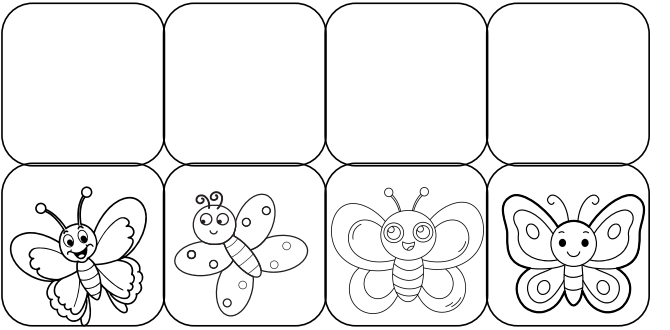
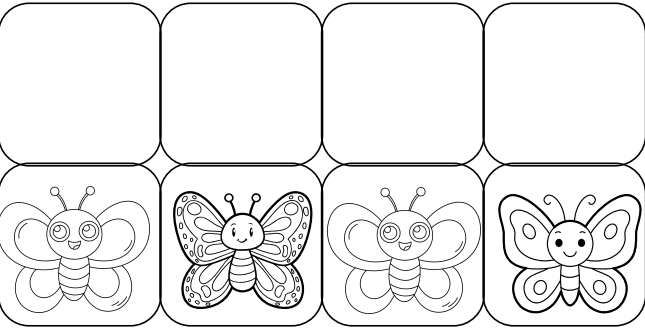
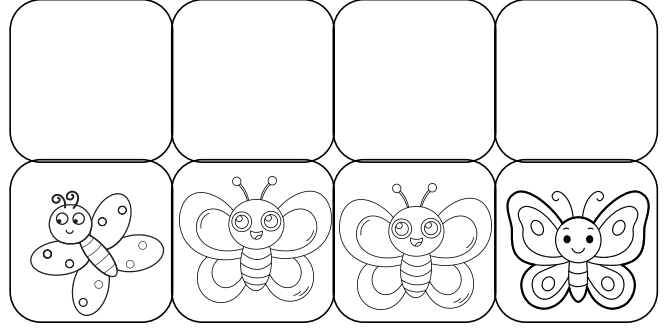
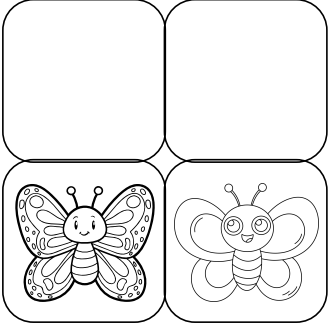
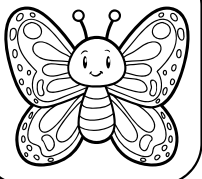
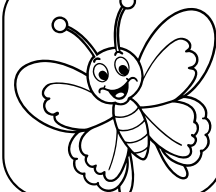
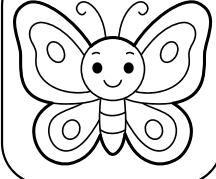
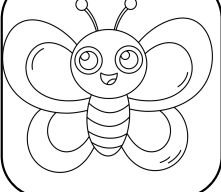
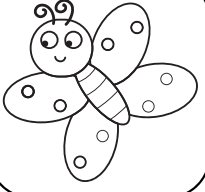
a

n

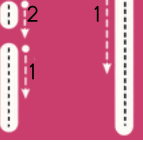
e

t

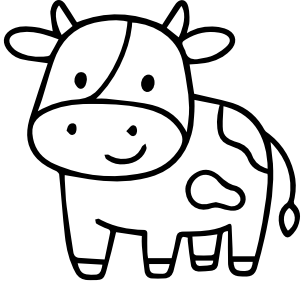
i



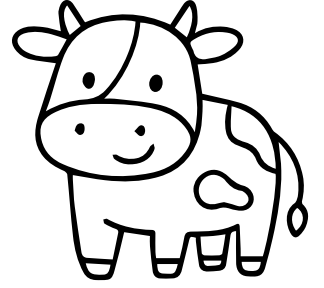
A N E T İ L



Aşağıdaki metni okuyalım ve her okuduğumuzda bir inek boyayalım.



At.



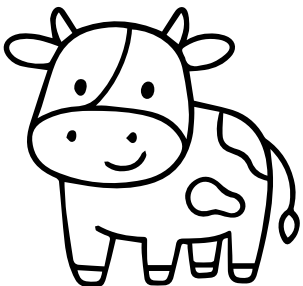
Anne at.

Anne nane at.

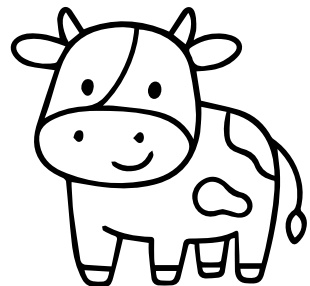
Anne ete nane at.

Anne nane at.

Anne at.



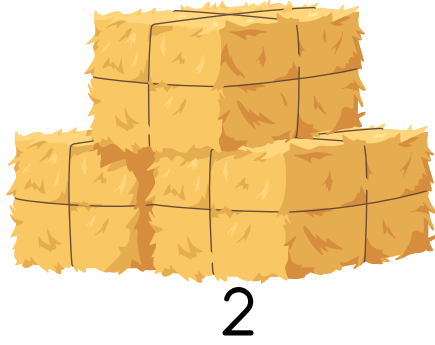
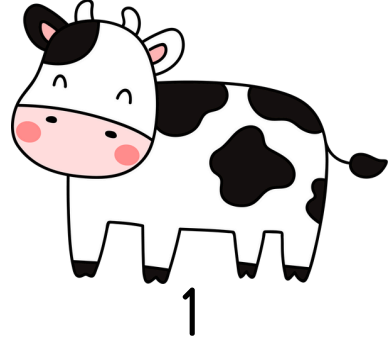
At



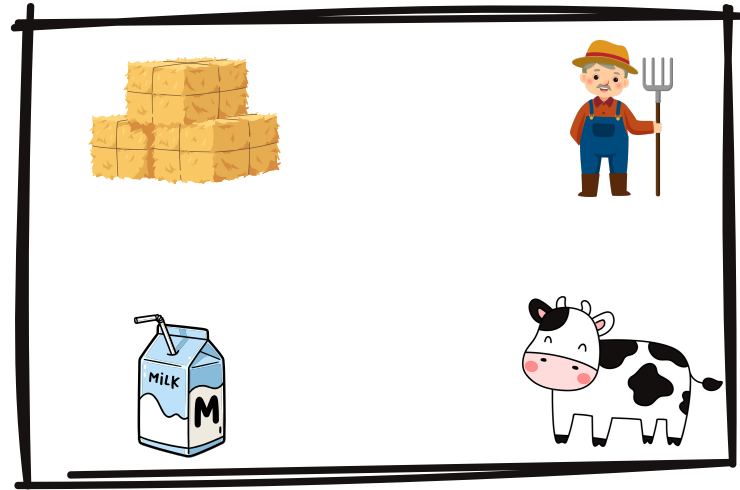
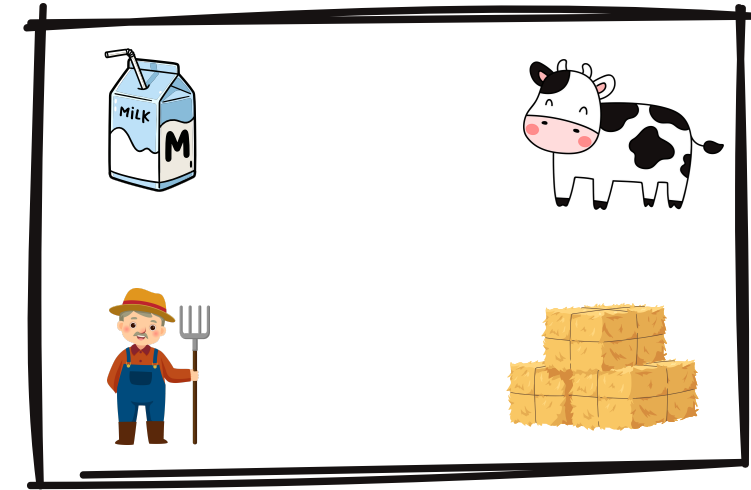
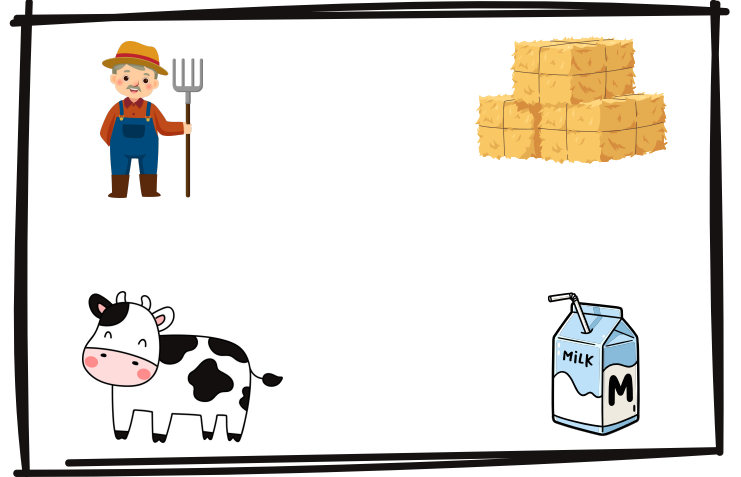
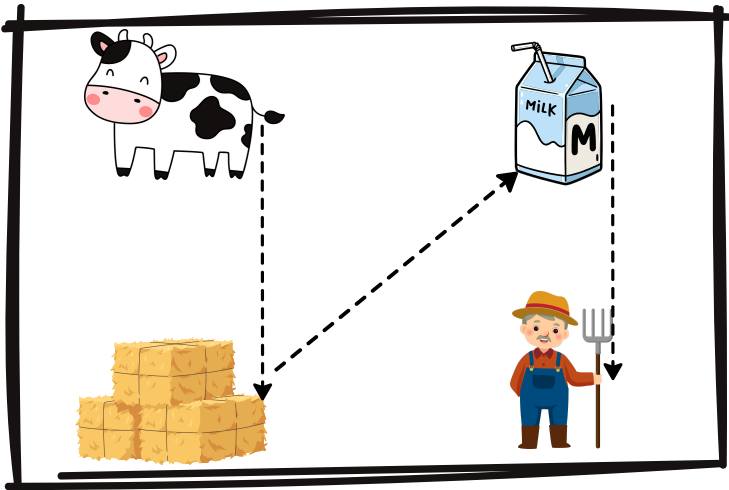
A N E T İ L



Aşağıdaki etkinliği örnekteki gibi yapalım.



ÖRNEK





Öğreten Adam

Ö Ğ R E N M E K S E N İ N H A K K I N